

A LEGACY STREET PROJECT

**QUINCY** ST  
NE

EST. 1912

NORTHEAST MINNEAPOLIS

# LEGACY STREETS

- Definition of “Legacy Street”
- History of Quincy Street
- Street Type - introduction of concept
- List of design recommendations

The agenda for Quincy Street Task Force was to identify the history, development and current conditions and uses of the streets in the Quincy St neighborhood. The proposal suggests creating a new street type: “Legacy Street”, which engenders legacy of the street type as a working street, as well as supporting evolution of street to one of a mix of makers, artists, designers, tech centers, brew pubs and restaurants.



42364

## LEGACY STREET / DEFINITION

### **Legacy Street salient features.**

- History as a street of “makers”: lumber, manufacturing etc.
- Working street: originally with RR at west side, then with active truck delivery/pickup etc.
- Street currently and originally composed of Purlington brick pavers.
- As a working street with commercial access, there are minimal trees or boulevards and active use of loading docks, both perpendicular and parallel parking, and mixed bicycle and pedestrian traffic.
- Character and use of street changes throughout the day and weekends from vehicle/truck traffic to pedestrian, bikes, cars, food trucks etc.





## HISTORY

The history of Quincy St NE is an interesting one. While it had a late start in roughly 1912, Quincy St, was once a site for lumber-yards to supply area buildings and homes, but quickly became a booming industrial location that was slightly lost in time while the area around grew out of its late 19th century roots.

Today Quincy St NE is a thriving location, but replacing the mercantile warehouses, wagons fabricators, foundries, and woolen goods, are artists, brew pubs, restaurants, design and tech centers.



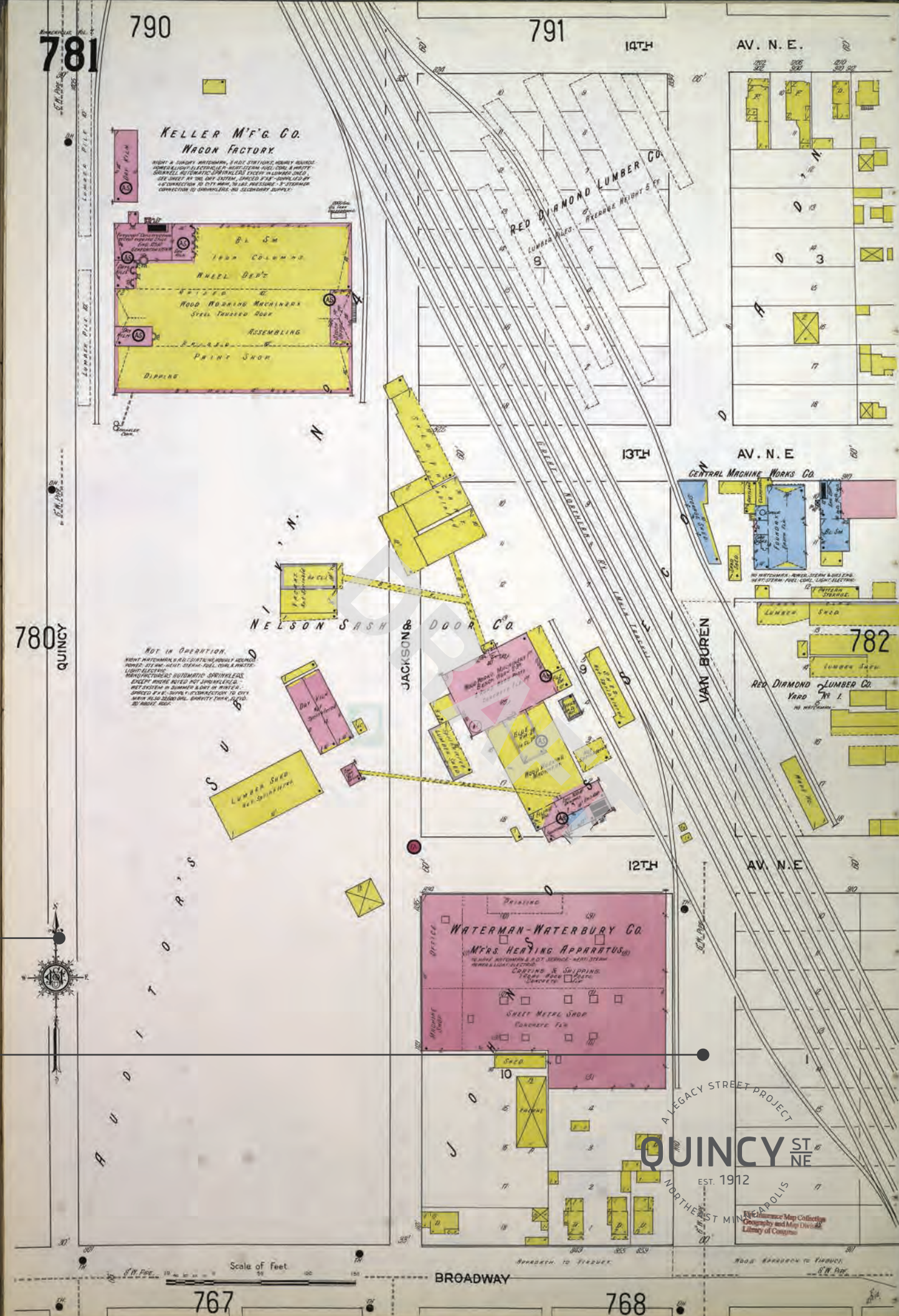
# LEGACY STREET / HISTORY-1912

## QUINCY ST NE

By design, you can see Quincy St NE was a smaller street of 30' vs the neighboring streets of the neighborhood that measured to 60'. Because of this, many buildings were built to the street width unlike Van Buren St. This leads to challenges and opportunities in the Quincy St NE Legacy Street Project.

Quincy St NE, measures to half the width of residential streets.

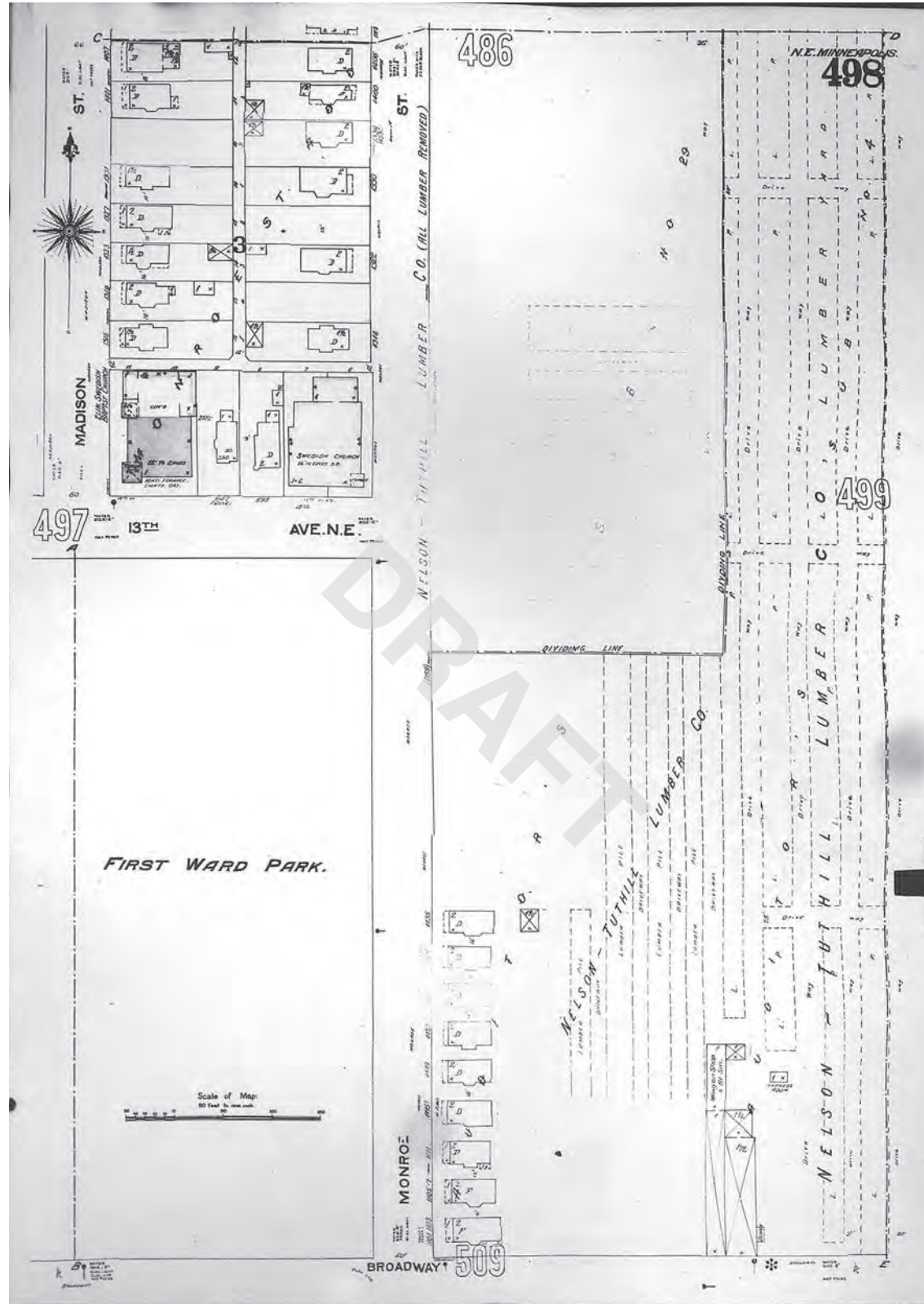
Van Buren St NE., like most streets in NE Mpls started at 60'.



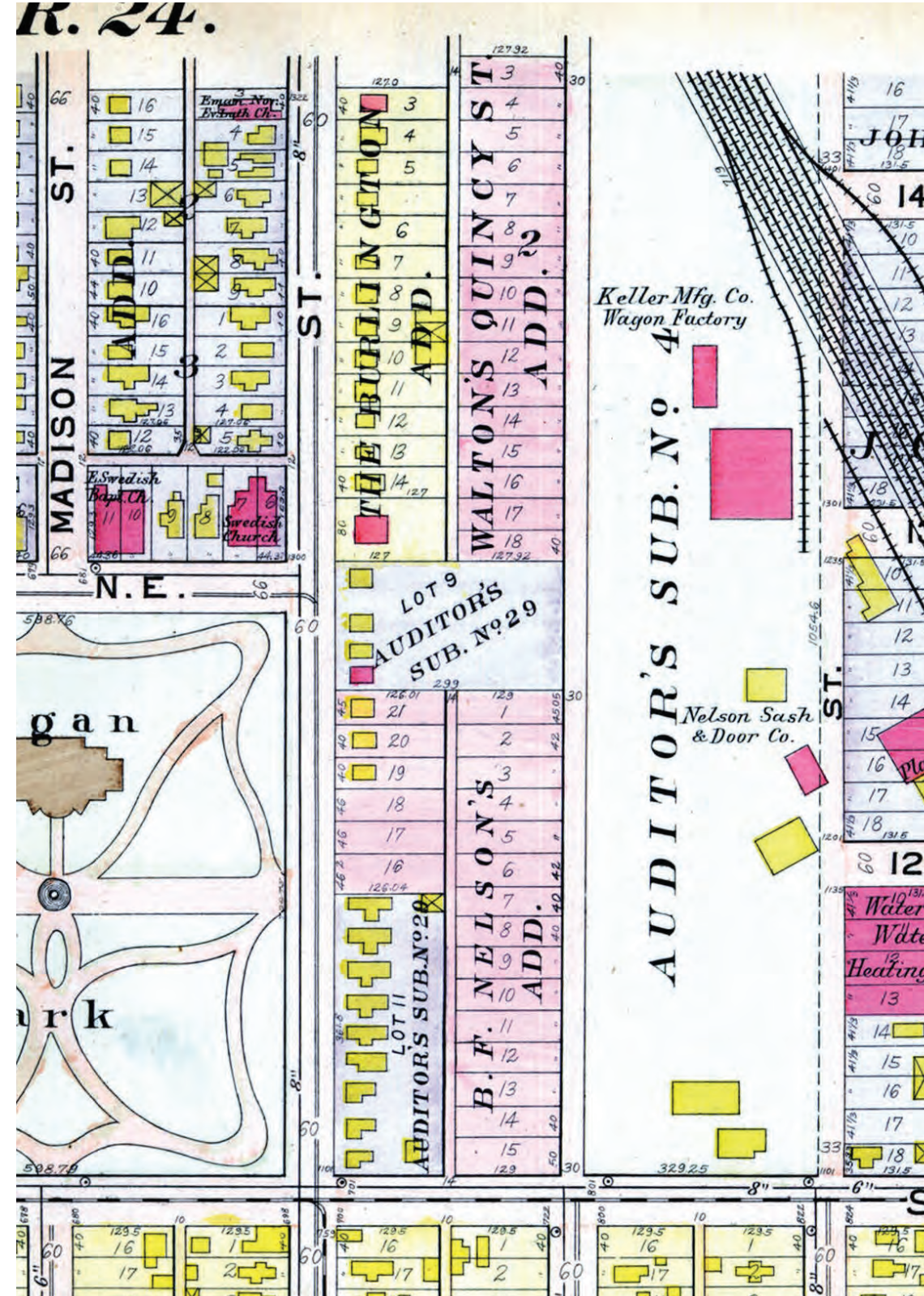


# LEGACY STREET / HISTORY-BEFORE AND AFTER

1906



1914





# LEGACY STREET / HISTORY

St Paul, Minneapolis and Manitoba Rail Lines	Nelson Tuthill Lumber Yard	Keller Mfg. Co. Wagon Factory	ABC Corrugated Box Co.	Kurt manufacturing	R^2 Company
Nelson Tenney Co. Lumber Yard	Logan Park established	Price Food Products Corp.	Nels Swanson Fuel and Transfer Co.	Johnson Paper Co.	Johnson Paper Co.
Planing Mill	Planing Mill	Waterman-Waterbury Co. Mfg. heating apparatus	Central Machine Works	Waterman-Waterbury Co. Mfg. heating apparatus	Waterbury Building Studios
[No Quincy Street]	Central Machinery	Red Diamond Lumber	Waterman-Waterbury Co. Mfg. heating apparatus	General Mills Co. Purity Oats Div. Cereal food factory	General Mills Co. Purity Oats Div. Cereal food factory
<b>1885</b>	<b>1903</b>	Minnesota Mazda Lamp Division	General Mills Co. Purity Oats Div. Cereal food factory	Minneapolis Board of Education Storage and repair shops	Highlight Center
		Frost-Naus Foundry Supplies	Minneapolis Board of Education Storage and repair shops	Permatite	Solar Arts Building
		Nash Coffee Co.	Twin City Cord and Tire Co.	Loft Building	Collage Architects Centro/Popol Vu Restaurants Sign Minds
		CW Olson Mfg. Co. Ornamental Iron, Forge and Machine Shop	Box Factory	Misc. makers: Mattress fabrication Metal fabricators Cabinet makers Auto repair shop Artist studios Musicians	Architectural Antiques
		Mahr Mfg. Co. Mfg. oil burning equipment	Loft Building		WORKSHOP
		National Tea Co. Grocery warehouse	CW Olson Mfg. Co.		Q.arma Building Makers Artist studios
		<b>1923</b>	<b>1950</b>	<b>1990</b>	

## 1885 2018

<b>1892</b>	<b>1912</b>	<b>1930</b>	<b>1966</b>	<b>2010</b>
St Paul and Northern Pacific RR	Keller Mfg. Co. Wagon Factory	Keller Mfg. Co. Wagon Factory	Airmotive Machining & Engineering Corp.	Kurt manufacturing
Great Northern RR	Nelson Sash and Door Co.	Nels Swanson Fuel and Transfer Co.	Nels Swanson Fuel and Transfer Co.	Johnson Paper Co.
Nelson Tenney Co. Lumber Yard	Waterman-Waterbury Co. Mfg. heating apparatus	Waterman-Waterbury Co. Mfg. heating apparatus	Waterman-Waterbury Co. Mfg. heating apparatus	Waterbury Building Studios
Planing Mill	Red Diamond Lumber	Central Machine Works	General Mills Co. Purity Oats Div. Cereal food factory	General Mills Co. Purity Oats Div.
Rail spur into lumber yard at approximate location of Quincy Street	Central Machinery	Northern Oats Co. Cereal food factory	Minneapolis Board of Education Storage and repair shops	Minneapolis Board of Education
	[Quincy Street established Rail spur remains on Quincy]	Minneapolis Board of Education Storage and repair shops	Sears Warehouse	Solar Arts Building
		Plicata Cedar Corp. Casket assembly	Rag and Paper Warehouse	Permatite
		Frost-Naus Foundry Supplies	Loft Building	Sign Minds
		Nash Coffee Co.	CW Olson Mfg. Co.	Architectural Antiques
		CW Olson Mfg. Co.		Uppercut Boxing Gym
		Twin City Textile Mill Jute and Shoddy factory		Kendall Studios
				Q.arma Building Makers Artist studios



## LEGACY STREET / TASK FORCE COMMITTEES

**Task Force is composed of two committees:**

**#1 - Culture and History**

**#2 - Traffic and Safety**

**The agenda for Quincy Street Task Force was to identify history, development, and current conditions and uses of the streets in the Quincy Street neighborhood. The proposal suggests creating a new street type: "Legacy Street," engendering the legacy of the street type as a working street, as well as supporting the evolution of Quincy Street to a mix of makers, artists, designers, tech centers, brew pubs, and restaurants.**





## LEGACY STREET / EXISTING CONDITIONS

**Working attributes:** West side has 5 loading docks, 4 drive entries, 5 trash/recycle pickups. East side has 5 drive entries.

**Parking attributes:** West side has 87 perpendicular parking spaces. East side has 53 parallel and 25 perpendicular parking spaces.



## LEGACY STREET / RECOMMENDATIONS

### **General and Big Ideas**

Pedestrian and bike safety should be top goal for street design and reconstruction

The character of Quincy changes along the length of the street; one solution or design will not work along the entire corridor. Flexibility in street type.

Intersection of Quincy & 15th needs improved sightlines and traffic calming measures

Pedestrian and bicycle paths through block interiors and parking lots

The group had interest in exploring a shared space or “woonerf” street. This is an urban design approach that minimizes segregation between modes of road user. Proponents suggest creating an uncertainty in who has priority reduces speed, vehicle dominance, and improves safety.





## LEGACY STREET / RECOMMENDATIONS

### **Small and Specific Ideas**

Preserve and reuse original bricks of Quincy Street

Surmountable curbs along Quincy Street

Reflective public art installation at corner of 15th and Quincy

Public art used for shade/snow cover, street furniture

Suggested materials of Quincy St: use combination of bricks, pavers, concrete/asphalt to visually break up street, slow cars down and create multiple pedestrian crossings along the corridor



## LEGACY STREET / PROPOSED IMPROVEMENTS

**Maintain existing parking** with perpendicular on west side and mix of perpendicular and parallel parking on east side of Quincy.

**Introduce signage** to control traffic speed.

**Add pedestrian crosswalks and signage** at key areas including between the Highlight Center and it's parking lot on the east side of Quincy Street, and at the corner of Quincy Street and 14th Ave.

**Introduce handicap curb cuts** at all crosswalks and intersections.

**Introduce a pedestrian crosswalk** at the south end of Quincy Street across Broadway Street.

**Install continuous sidewalk** from Broadway to 15th Ave along the east side of Quincy Street.

**Install trees** along east side of Quincy adjacent to Highlight Center, and phase out trees at the north end of Quincy in order to maintain Legacy Street character.





# CURRENT QUINCY ST NE / 2018



Solar Arts Building  
Studios & a brewery  
in a historic space

Northrup King Building

Art Force

Rosalux Gallery

Architectural Antiques

Uppercut Boxing Gym

Elim Church

Q.arma Building

Northeast Ice Arena

Ideal Diner

Youngblood Lumber

Blu Dot Co.

Bauhaus Brew Labs

Logan Park

Able Seedhouse  
+ Brewery

SportsEngine

Waterbury Building

Van Buren Building

Specialized Treatment  
Services Inc.

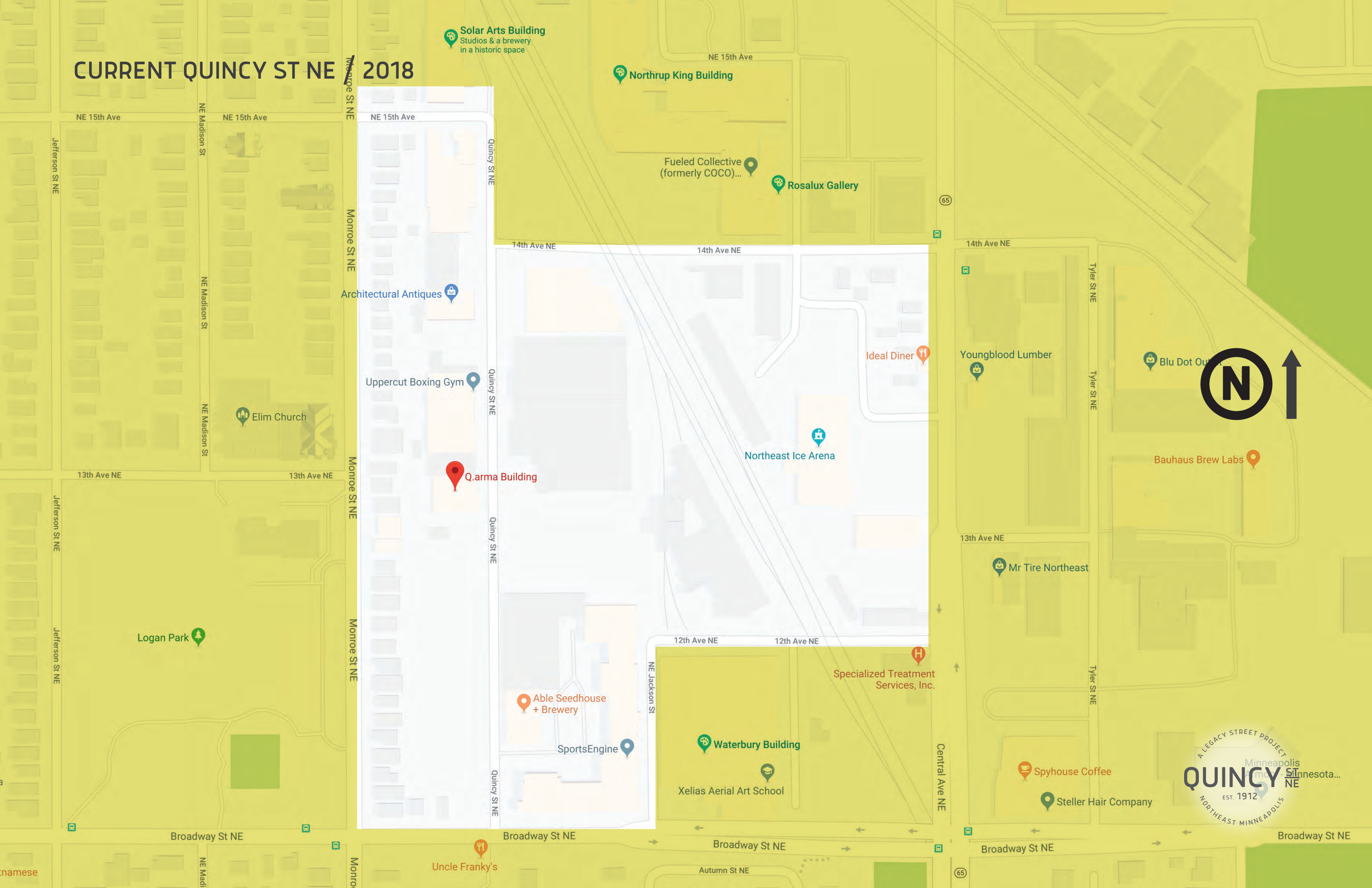
Spyhouse Coffee

Steller Hair Company

MINNEAPOLIS  
ARMORY - MINNESOTA...  
**QUINCY ST NE**  
EST. 1912  
A LEGACY STREET PROJECT  
NORTHEAST MINNEAPOLIS



# CURRENT QUINCY ST NE 2018



**Solar Arts Building**  
Studios & a brewery  
in a historic space

**Northrup King Building**

Fueled Collective  
(formerly COCO)...

**Rosalux Gallery**

**Architectural Antiques**

**Uppercut Boxing Gym**

**Elim Church**

**Q.arma Building**

**Northeast Ice Arena**

**Ideal Diner**

**Youngblood Lumber**

**Blu Dot Outlets**

**Bauhaus Brew Labs**

**Logan Park**

**Able Seedhouse  
+ Brewery**

**Specialized Treatment  
Services, Inc.**

**SportsEngine**

**Waterbury Building**

**Xelias Aerial Art School**

**Spyhouse Coffee**

**Steller Hair Company**



**Uncle Frank's**

nameese



# LEGACY STREET / PROPOSED IMPROVEMENTS

## Problem:

Safety hierarchy: Pedestrians -> bicycles -> vehicles

Quincy: Conflict points between bikes and cars when cars are leaving parking stalls

Quincy: pedestrian safety

Turn at Quincy & 15th

14th Avenue: Lack of sidewalks · Utilities in sidewalk · Visibility entering Quincy

Lack of green space

Freight, deliveries, loading

14th Avenue toward Central

Broadway & Quincy: dangerous pedestrian crossing

Jackson: bad sidewalk on east side of street

12th Avenue, south side

15th Avenue: drop-off/valet

Storm water management and drainage, especially along Quincy Avenue

## Solution:

Speed control: Signage · Lower speeds at different times of day  
Ped/Bike visibility · Surmountable curbs · Speed bumps/speed tables at crosswalks  
Pedestrian Mall · Brick pavers (ensure surface is safe for bikes & peds)

Speed control and signage

Pedestrian refuges - opportunity for public art: Legacy Kiosks (interactive)

Slower speeds · Mirrors - public art · Pedestrian refuge  
Yield to pedestrian signage

Underground utilities  
Curb bump-outs at intersections

Pocket park (see board R2) · "Industrial greening": raised plant beds  
More "traditional" green space in appropriate areas

Maintain existing

Better sidewalks, complete sidewalk network · Underground utilities  
Reconstruct sidewalks to ADA standards

Reconstruct sidewalk

Complete sidewalk network





**NE Quincy Street**  
NE Mpls, MN  
10.02.2018



**STREET PERSPECTIVE**

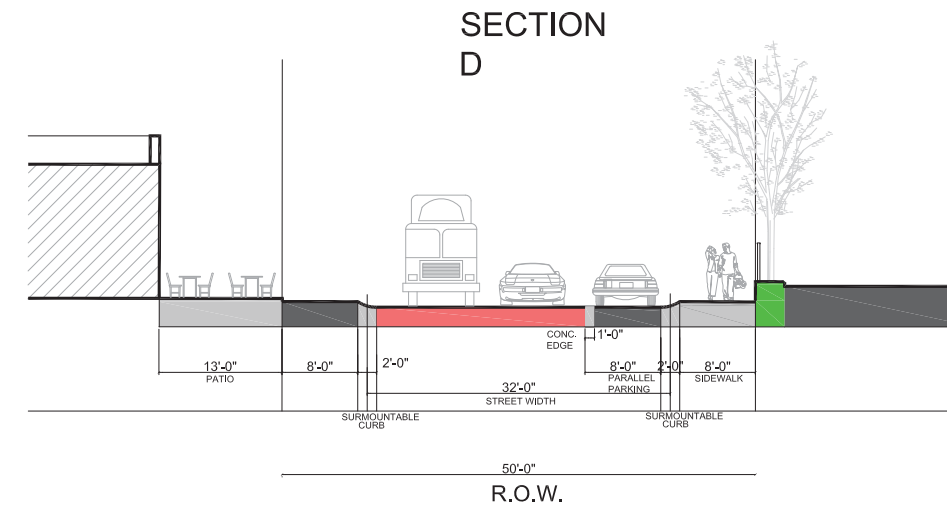
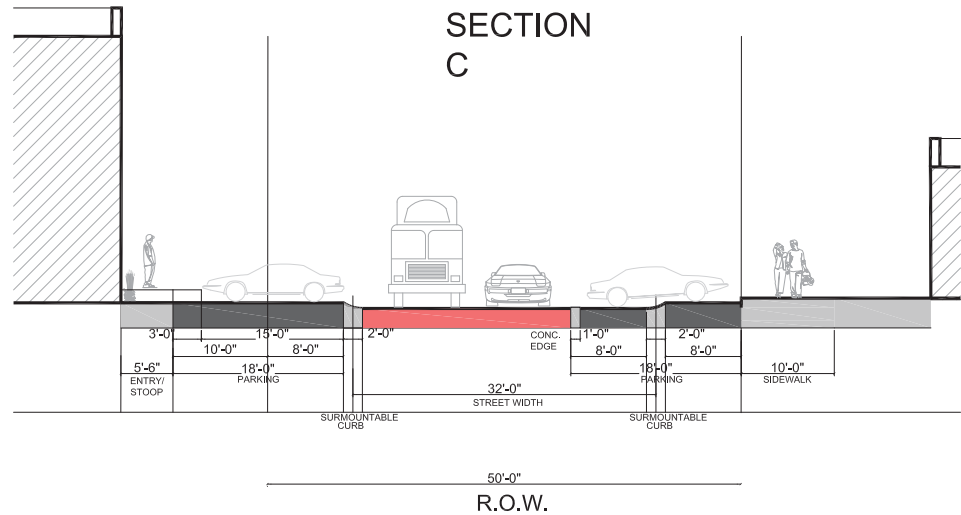
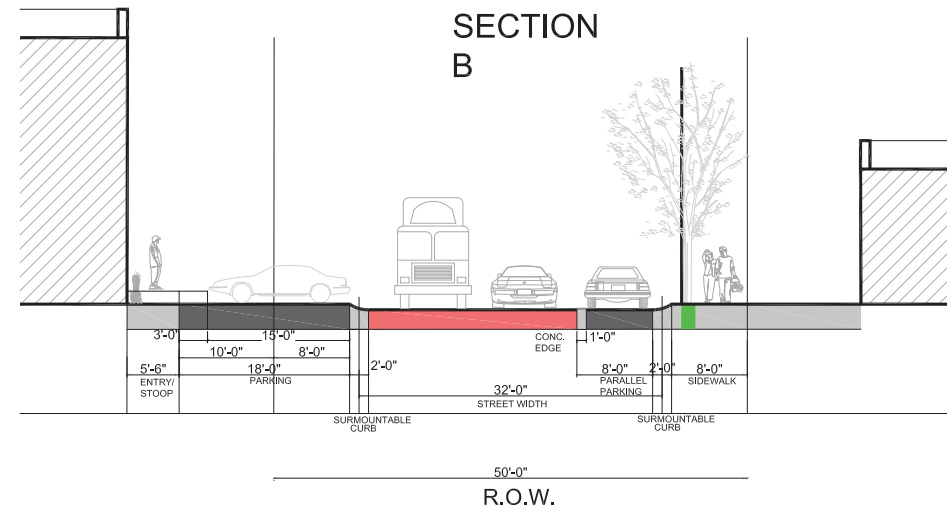
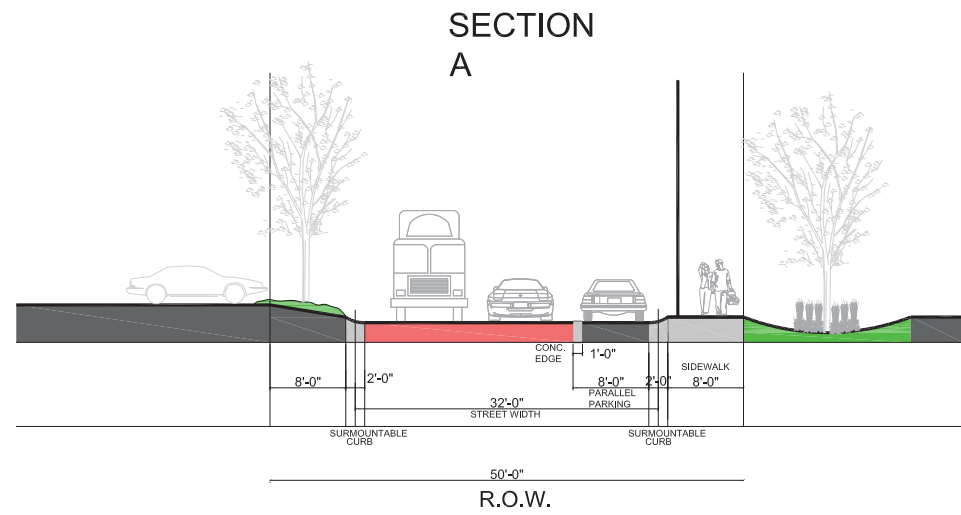




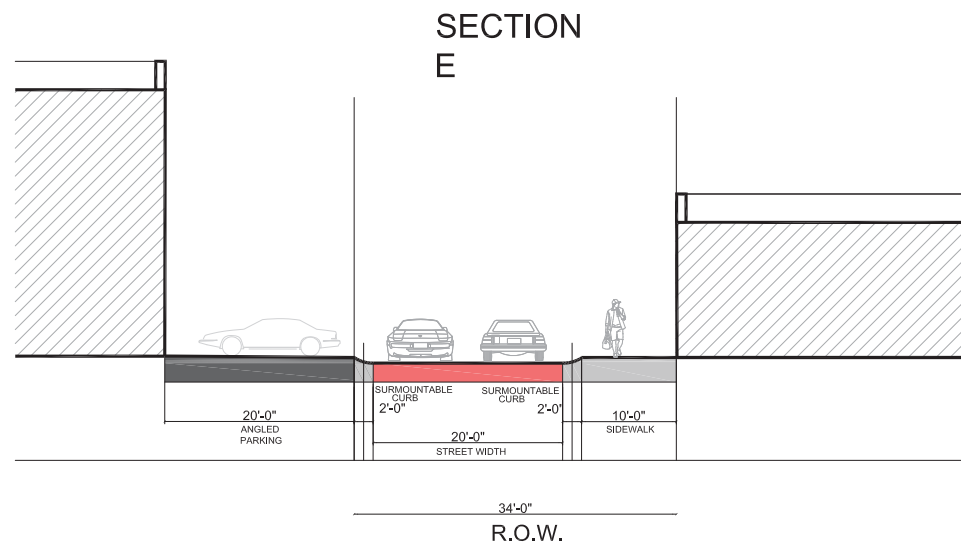
# LEGACY STREET / DESIGNS



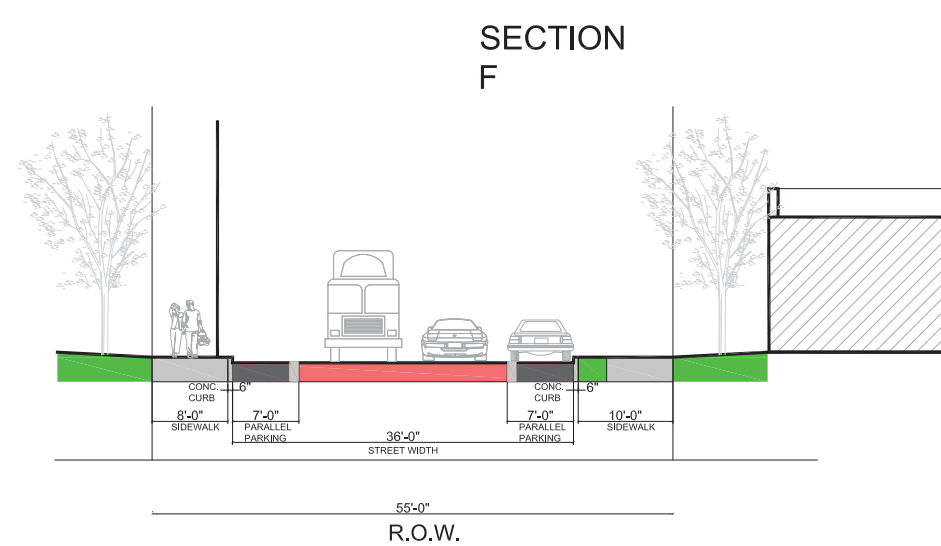
**NE Quincy Street**  
NE Mpls, MN  
10.02.2018



## TYLER ST



## 14TH AVE. NE

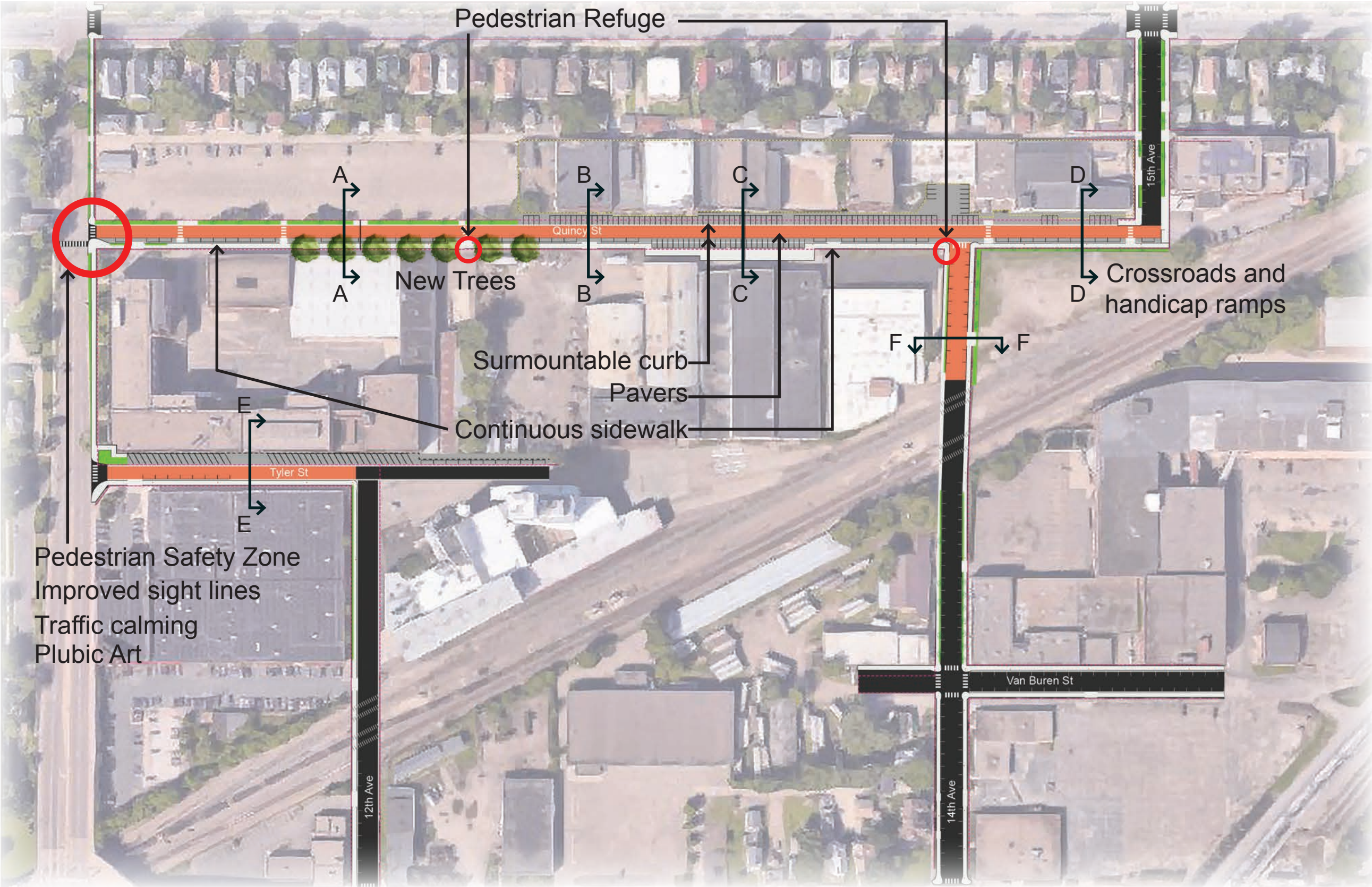


## STREET SECTIONS

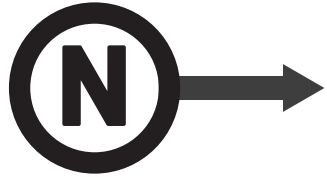




# CURRENT QUINCY ST NE / 2018



**NE Quincy Street**  
 NE Mpls, MN  
 10.02.2018



**AERIAL SITE PLAN**





**THANK YOU.**

